



PRECIOSA

Brilliant

RESIDENTIAL
LIGHTING
FIXTURES

NEW 2007

Dear Friends,

Your suggestions, together with current trends in interior design, constantly inspire us to design new types of lighting fixtures using genuine Bohemian crystal. Our new product catalog you have just opened speaks volumes about this. Following current trends in interior design for 2007, our catalog features a collection of novelties designed and made of Bohemian crystal under the brand name "PRECIOSA".

Our artists' aim was to create new types of lighting fixtures using chandelier trimmings in color tones that are currently in great demand among interior designers. Our innovative trimmings colors that we have designed for the coming season are primarily natural colors and contrasting colors Jet and Siam.

We also focused on creating new, nontraditional shapes of lighting fixtures based on current trends in interior design as well. For these, please see pages 8, 9, 10 and 11.

For those customers who prefer our classical chandeliers from the Brilliant collection, particularly those in pure crystal, we have designed the collection's most popular types of lighting fixtures with added colored trimmings, thus giving our traditional and still-favorite fixtures a completely new face – a face for 2007. And what's no less important, they match both modern and classical interiors.

Hopefully, our new catalog will convince you of the meticulous and creative work we have put into designing these new Preciosa lighting fixtures. We believe you will select just the right one to fit your interior.

Sincerely yours,



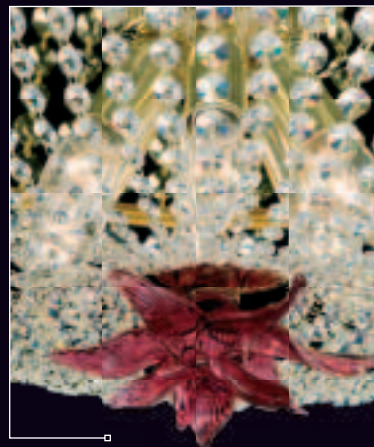
Jaroslav Demel
Vice President for Sales
Preciosa - Lustry, a.s.



The New Trend – Lighting Fixtures with Floral Motifs



1



A basket-shaped fixture from the Brilliant collection, featuring a mouth-blown glass flower

DESIGN: Jaroslav Bejvl

A basket-shaped fixture from the Brilliant collection, featuring cascading flowers and metal-coated octagons in Marea (gold) and Bermuda (blue)

DESIGN: Taťána Dvořáková



2

	Art. Number	Metal Finish	Color of Glass	Trimmings	Dimensions (cm)	Dimensions (in)	Wattage
1	CB 1174/00/006	Brass	Rose	Standard	Ø 50 ↑ 40	Ø 20 ↑ 16	6x E14 - 40 W
2	CB 1171/00/006	Brass	No Glass Parts	Standard - Bermuda, Marea, Plated	Ø 58 ↑ 30	Ø 23 ↑ 12	6x E14 - 40 W



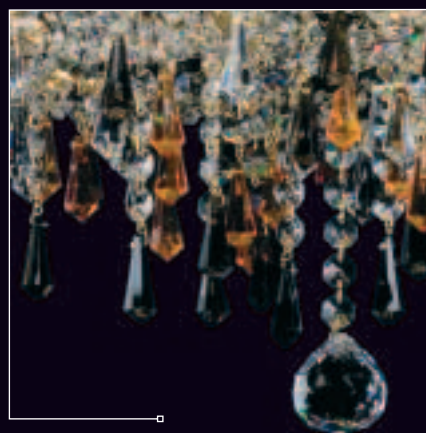
Back to Our Roots – a New Design in the Byzantine Style



3



4



Sunlight and Dark Smoky – the new colors of chandelier trimmings

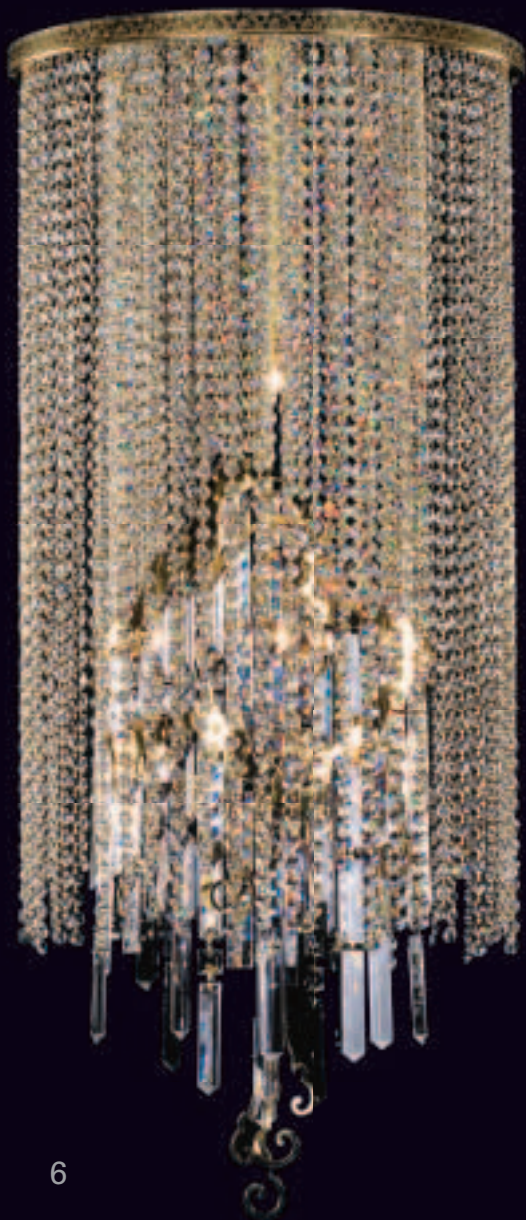
DESIGN: Jaroslav Bejvl Jr.

	Art. Number	Metal Finish	Color of Glass	Trimmings	Dimensions (cm)	Dimensions (in)	Wattage
3	CB 1175/00/006	Brass	No Glass Parts	Standard - Dark Smoky	Ø 52 ↑ 50	Ø 20 ↑ 20	6x E14 - 40 W
4	CB 1175/01/006	Brass	No Glass Parts	Standard - Sunlight + Dark Smoky	Ø 52 ↑ 50	Ø 20 ↑ 20	6x E14 - 40 W



New Designs of Chandeliers featuring Crystal Curtains

A distinctive combination of colored and crystal chandelier trimmings
 DESIGN: Jaroslav Bejvl



A crystal column with a crystal cloudlet formed from bevelled cut stones and decorated with precise metal parts
 DESIGN: Luděk Hroch

	Art. Number	Metal Finish	Color of Glass	Trimmings	Dimensions (cm)	Dimensions (in)	Wattage
5	CB 1176/00/006	Brass	Crystal	Standard - Siam	Ø 45 ↑ 60	Ø 18 ↑ 24	6x E14 - 40 W
6	CB 1167/00/005	Brass	No Glass Parts	Standard	Ø 47,5 ↑ 98	Ø 19 ↑ 39	6x G9 - 40 W



Shining Tenderness

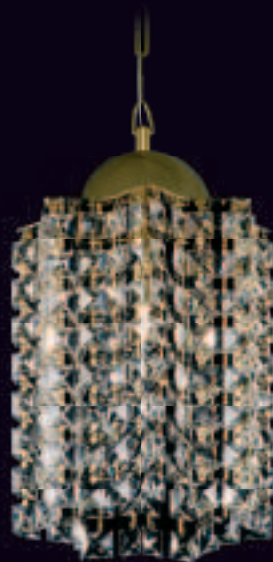
8



A tender chandelier – a star-shaped curtain in crystal and Light Amethyst

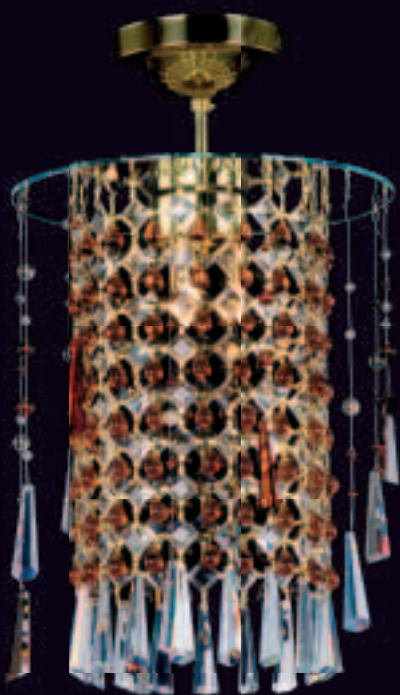
DESIGN: Světlana Svatošová

7



A tender chandelier – a star-shaped curtain in crystal

DESIGN: Světlana Svatošová



9



A tender chandelier created from crystal lace with glass drops in Dark Topaz. The entire fixture is surrounded by a delicate veil formed from cut stones and glass beads

DESIGN: Miroslava Černovská

	Art. Number	Metal Finish	Color of Glass	Trimmings	Dimensions (cm)	Dimensions (in)	Wattage
7	CB 5002/00/001	Brass	No Glass Parts	Standard	Ø 22 ↑ 38	Ø 9 ↑ 15	1x G9 - 60 W
8	CB 5002/01/001	Nickel	No Glass Parts	Standard - Light Amethyst	Ø 22 ↑ 56	Ø 9 ↑ 22	1x G9 - 60 W
9	CB 5003/00/003	Brass	Crystal	Standard - Dark Topaz	Ø 30 ↑ 52	Ø 12 ↑ 20	3x G9 - 60 W



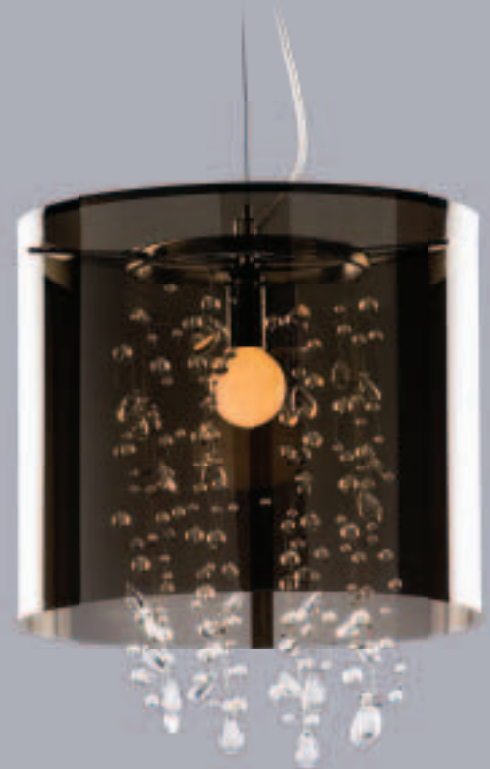
The Mysterious Beauty



10



11



12

A design by the company's chief designer
DESIGN: Jaroslav Bejvl Jr.

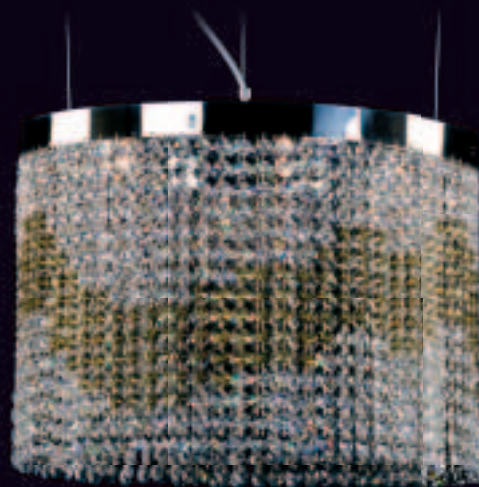
	Art. Number	Metal Finish	Color of Glass	Trimmings	Dimensions (cm)	Dimensions (in)	Wattage
10	PB 5020/00/001	Nickel	No Glass Parts	Standard	Ø 38 ↑ 30	Ø 15 ↑ 12	1x E14-Bellalux - 40W
11	PB 5020/01/001	Nickel	No Glass Parts	Standard	Ø 38 ↑ 32	Ø 15 ↑ 13	1x E14-Bellalux - 40W
12	PB 5020/02/001	Nickel	No Glass Parts	Standard	Ø 38 ↑ 45	Ø 15 ↑ 18	1x E14-Bellalux - 40W

The New Design – Shining Crystal Veils



13

A fixture design in the shape of a flowing veil
 DESIGN: Jaroslav Bejvl



14

The crystal veil is decorated with a colored wavy line in Lime Yellow
 DESIGN: Jaroslav Bejvl Jr.

	Art. Number	Metal Finish	Color of Glass	Trimmings	Dimensions (cm)	Dimensions (in)	Wattage
13	PB 5318/00/008	Brass	No Glass Parts	Standard	Ø 50 ↑ 35+L	Ø 20 ↑ 14+L	8x G4 - 20W
14	PB 5319/00/008	Stainless	No Glass Parts	Standard - LimeYellow	Ø 30 ↑ 40+L	Ø 12 ↑ 16+L	8x G4 reflector - 20W



The New Design – Crystal Dandelions

15



16

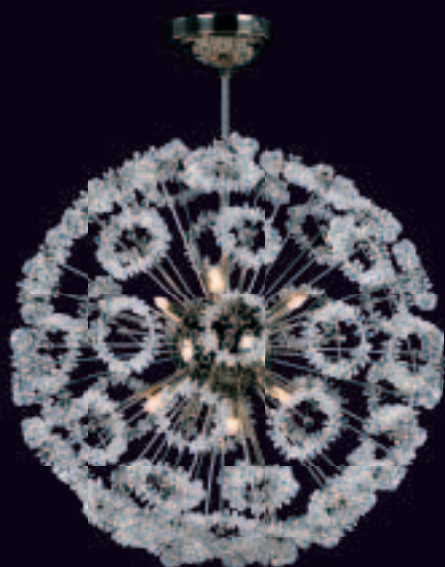
A shining ball formed from crystal stars – a new trendy design in retro style of the 1970s
 DESIGN: Ivan Kriegler

	Art. Number	Metal Finish	Color of Glass	Trimmings	Dimensions (cm)	Dimensions (in)	Wattage
15	CB 5009/01/009	Nickel	Crystal	No Trimmings	Ø 60 ↑ 60	Ø 24 ↑ 24	9x G9 - 40 W
16	CB 5009/01/009	Brass	Crystal	No Trimmings	Ø 60 ↑ 60	Ø 24 ↑ 24	9x G9 - 40 W

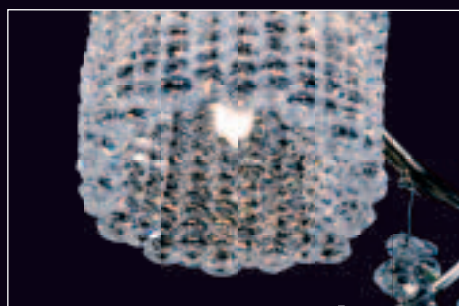
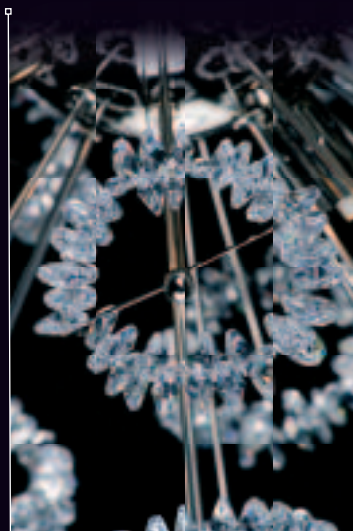


The New Design – Playing with Crystal

A shining ball – a dandelion flower formed from strung octagons
 DESIGN: Taťána Dvořáková

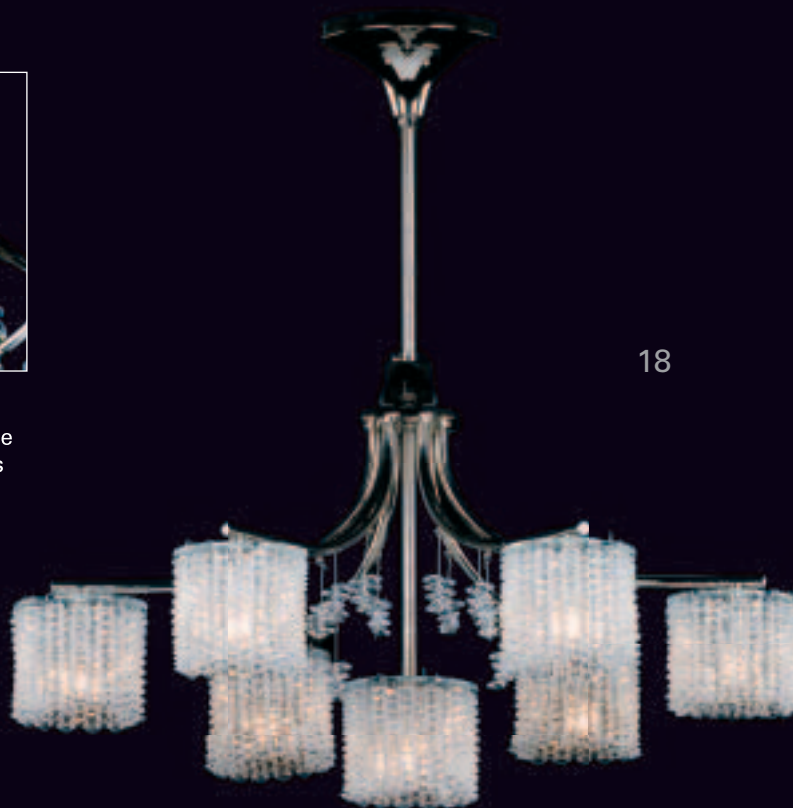


17



The chandelier's lampshades are made from uniquely strung crystal octagons
 DESIGN: Luděk Hroch

18



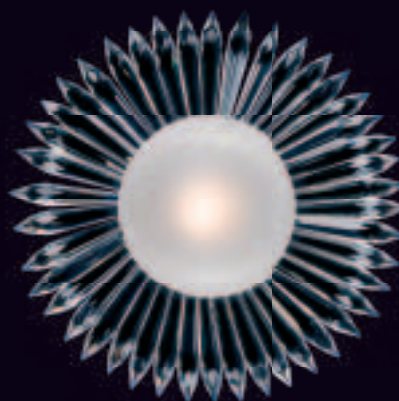
	Art. Number	Metal Finish	Color of Glass	Trimmings	Dimensions (cm)	Dimensions (in)	Wattage
17	CB 5004/00/006	Nickel	No Glass Parts	Standard	Ø 50 ↑ 65	Ø 20 ↑ 26	6x G9 - 40 W
18	AB 5005/00/007	Nickel	Crystal	Standard	Ø 62 ↑ 62	Ø 24 ↑ 24	7x G9 - 40 W



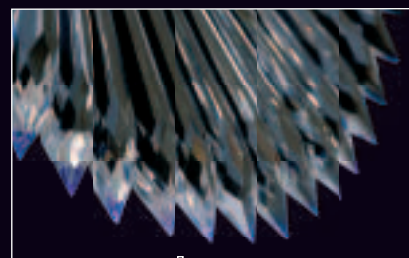
The New Design - a Shining Interplay of Matte and Crystal Glass



19

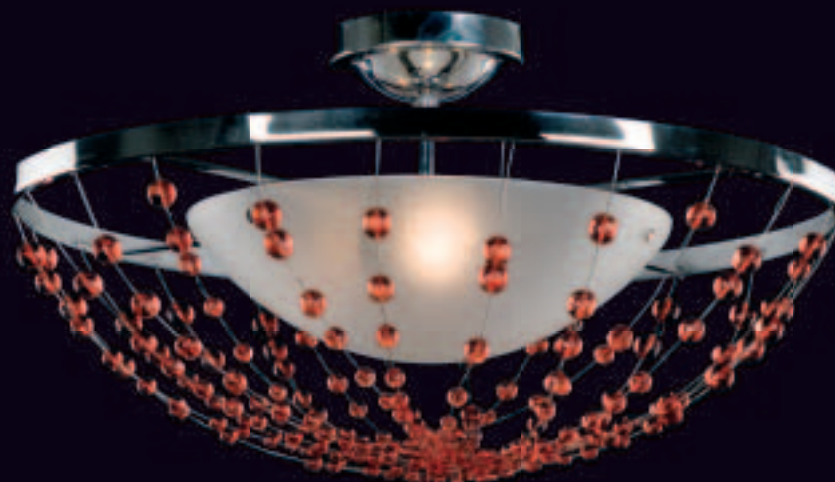


20



Cut drops in Dark Sapphire light up when the chandelier is switched on

DESIGN: Hana Vítková



21

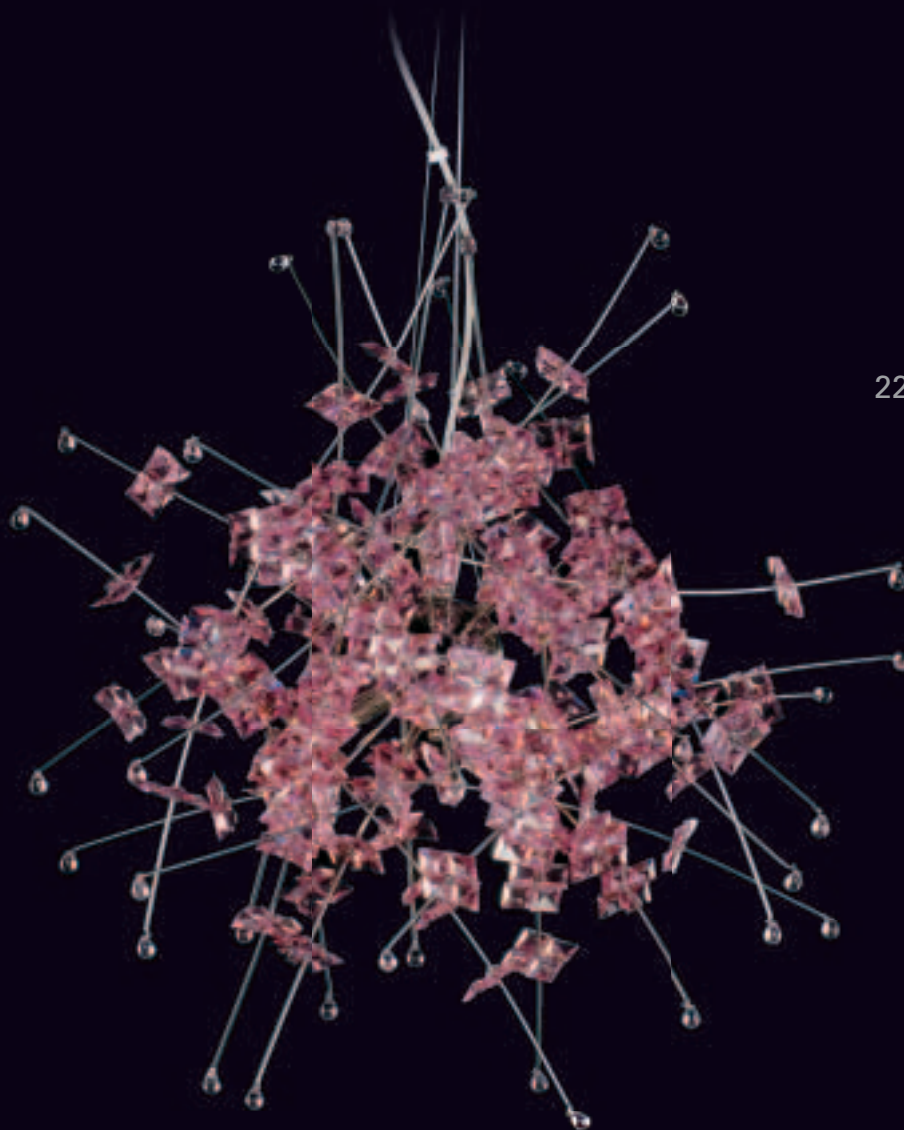
A modern combination of an illuminated lampshade and delicate strung beads

DESIGN: Věra Soukupová

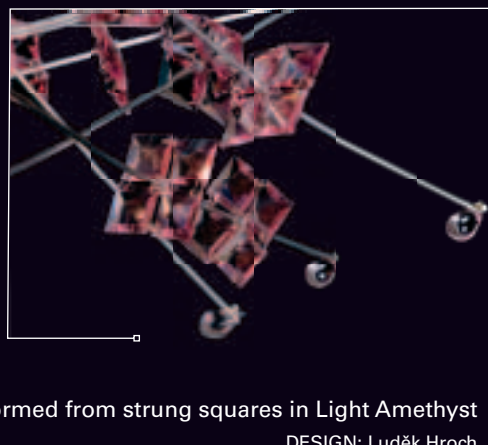
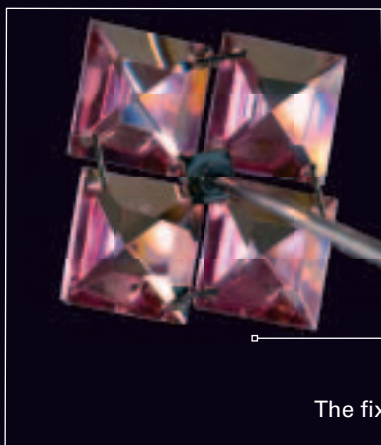
	Art. Number	Metal Finish	Color of Glass	Trimmings	Dimensions (cm)	Dimensions (in)	Wattage
19	PD 5006/00/001	Chromium	Cry Frost	Standard - Dark Sapphire	Ø 28 ↑ 25+L	Ø 11 ↑ 10+L	1x G9 - 25W
20	WD 5006/00/001	Chromium	Cry Frost	Standard - Dark Sapphire	↔ 28 ↑ 28 ↗ 12	↔ 11 ↑ 11 ↗ 5	1x G9 - 25W
21	CB 1173/00/003	Chromium	Cry Frost	Traditional - Rose	Ø 60 ↑ 35	Ø 24 ↑ 14	3x E14 - 40W



The New Design – an Exotic Flower



22



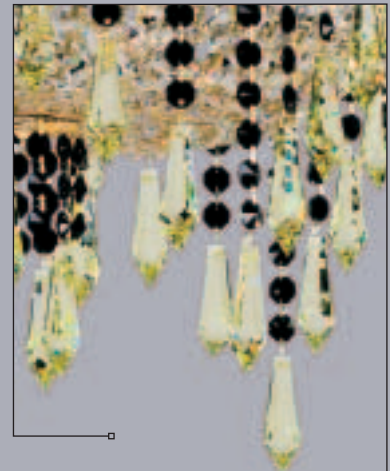
The fixture's original shape is formed from strung squares in Light Amethyst
DESIGN: Luděk Hroch

	Art. Number	Metal Finish	Color of Glass	Trimmings	Dimensions (cm)	Dimensions (in)	Wattage
22	PD 5007/00/003	Nickel	No Glass Parts	Standard - Light Amethyst	Ø 80 ↑ 80+L	Ø 31 ↑ 31+L	3x G9 - 40W





23



A hexagonal chandelier with trimmings in Jet and Jonquil created in the style popular with today's interior designers

DESIGN: Jana Musilová

	Art. Number	Metal Finish	Color of Glass	Trimmings	Dimensions (cm)	Dimensions (in)	Wattage
23	CB 1177/00/006	Brass	No Glass Parts	Standard - Jet+Jonquil	Ø 56 ↑ 50	Ø 22 ↑ 20	6x E14 - 40 W



The New Design – The Lightness of Light



24



25

Light crystal baskets with delicate colored veils formed from cut chandelier trimmings

DESIGN: Jaroslav Bejvl

	Art. Number	Metal Finish	Color of Glass	Trimmings	Dimensions (cm)	Dimensions (in)	Wattage
24	BB 1179/00/003	Nickel	Crystal	Standard - Jet	Ø 60 ↑ 57	Ø 24 ↑ 22	3x E14 - 40 W
25	BB 1179/00/003	Nickel	Crystal	Standard - Light Siam	Ø 60 ↑ 57	Ø 24 ↑ 22	3x E14 - 40 W



The New Design – The New Elegance



26

A traditional chandelier with striking metal details and crystal trimmings to connect elegance with the present

DESIGN: Luděk Hroch

	Art. Number	Metal Finish	Color of Glass	Trimmings	Dimensions (cm)	Dimensions (in)	Wattage
26	BB 1168/00/021	Brass	Crystal	Standard	Ø 110 ↑ 60	Ø 43 ↑ 24	21x E14 - 40 W



The New Design – A Crystal Spiral



27

An original spiral richly decorated with Light Amethyst cut chandelier trimmings of various shapes and sizes

DESIGN: Jana Musilová

	Art. Number	Metal Finish	Color of Glass	Trimmings	Dimensions (cm)	Dimensions (in)	Wattage
27	CB 1178/00/008	Chromium	No Glass Parts	Standard - Light Amethyst	Ø 60 ↑ 42	Ø 24 ↑ 17	8x G9 - 40 W



Popular lighting fixtures in new colors



Light Topaz



Green



Jonquil

	Art. Number	Metal Finish	Color of Glass	Trimmings	Dimensions (cm)	Dimensions (in)	Wattage
28	BB 0933/02/006	Brass	No Glass Parts	Standard - Light Topaz	Ø 40 ↑ 65	Ø 16 ↑ 26	6x E14 - 40 W
29	CB 0933/02/004	Brass	No Glass Parts	Standard - Light Topaz	Ø 40 ↑ 39	Ø 16 ↑ 15	4x E14 - 40 W
30	WB 0933/02/002	Brass	No Glass Parts	Standard - Light Topaz	↔ 25 ↑ 21 ↗ 13	↔ 10 ↑ 8 ↗ 5	2x E14 - 40 W
31	BB 0933/02/006	Brass	No Glass Parts	Standard - Green	Ø 40 ↑ 65	Ø 16 ↑ 26	6x E14 - 40 W
32	CB 0933/02/004	Brass	No Glass Parts	Standard - Green	Ø 40 ↑ 39	Ø 16 ↑ 15	4x E14 - 40 W
33	WB 0933/02/002	Brass	No Glass Parts	Standard - Green	↔ 25 ↑ 21 ↗ 13	↔ 10 ↑ 8 ↗ 5	2x E14 - 40 W
34	BB 0933/02/006	Brass	No Glass Parts	Standard - Jonquil	Ø 40 ↑ 65	Ø 16 ↑ 26	6x E14 - 40 W
35	CB 0933/02/004	Brass	No Glass Parts	Standard - Jonquil	Ø 40 ↑ 39	Ø 16 ↑ 15	4x E14 - 40 W
36	WB 0933/02/002	Brass	No Glass Parts	Standard - Jonquil	↔ 25 ↑ 21 ↗ 13	↔ 10 ↑ 8 ↗ 5	2x E14 - 40 W





Popular lighting fixtures in new colors

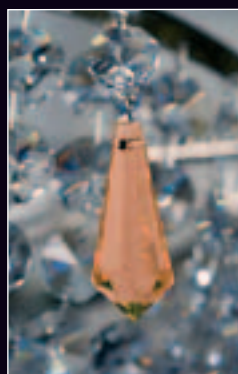


We offer the depicted lighting fixtures' trimmings in Light Topaz, Green and Jonquil.

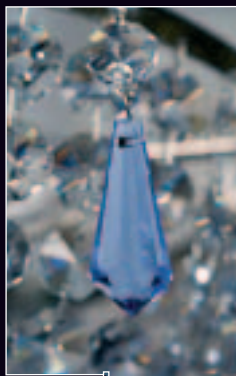
	Art. Number	Metal Finish	Color of Glass	Trimmings	Dimensions (cm)	Dimensions (in)	Wattage
28	BB 0933/02/006	Brass	No Glass Parts	Standard - Light Topaz	Ø 40 ↑ 65	Ø 16 ↑ 26	6x E14 - 40 W
32	CB 0933/02/004	Brass	No Glass Parts	Standard - Green	Ø 40 ↑ 39	Ø 16 ↑ 15	4x E14 - 40 W
36	WB 0933/02/002	Brass	No Glass Parts	Standard - Jonquil	↔ 25 ↑ 21 ↗ 13	↔ 10 ↑ 8 ↗ 5	2x E14 - 40 W



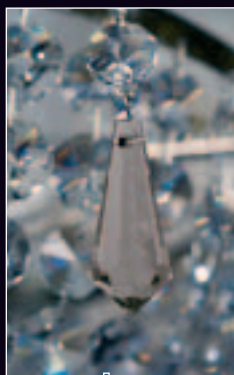
Popular lighting fixtures in new colors



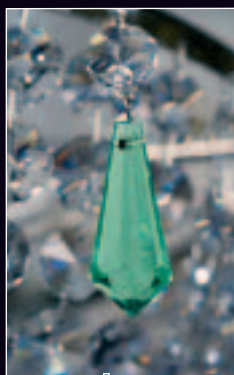
Rosaline



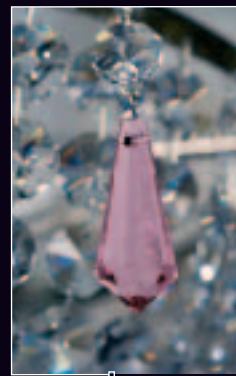
Sapphire



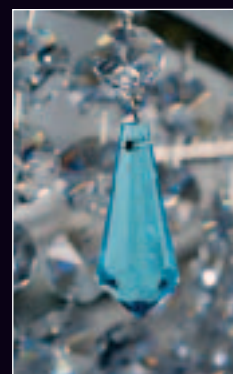
Light Smoky



Green



Light Amethyst



Aqua

	Art. Number	Metal Finish	Color of Glass	Trimmings	Dimensions (cm)	Dimensions (in)	Wattage
37	CB 0914/02/009	Nickel	No Glass Parts	Standard - Rosaline	Ø 70 ↑ 51	Ø 28 ↑ 20	9x E14 - 40 W
38	CB 0914/02/004	Nickel	No Glass Parts	Standard - Rosaline	Ø 43 ↑ 45	Ø 17 ↑ 18	4x E14 - 40 W
39	WB 0914/02/002	Nickel	No Glass Parts	Standard - Rosaline	↔ 25 ↑ 23 ↗ 13	↔ 10 ↑ 9 ↗ 5	2x E14 - 40 W
40	CB 0914/02/009	Nickel	No Glass Parts	Standard - Light Smoky	Ø 70 ↑ 51	Ø 28 ↑ 20	9x E14 - 40 W
41	CB 0914/02/004	Nickel	No Glass Parts	Standard - Light Smoky	Ø 43 ↑ 45	Ø 17 ↑ 18	4x E14 - 40 W
42	WB 0914/02/002	Nickel	No Glass Parts	Standard - Light Smoky	↔ 25 ↑ 23 ↗ 13	↔ 10 ↑ 9 ↗ 5	2x E14 - 40 W
43	CB 0914/02/009	Nickel	No Glass Parts	Standard - Aqua	Ø 70 ↑ 51	Ø 28 ↑ 20	9x E14 - 40 W
44	CB 0914/02/004	Nickel	No Glass Parts	Standard - Aqua	Ø 43 ↑ 45	Ø 17 ↑ 18	4x E14 - 40 W
45	WB 0914/02/002	Nickel	No Glass Parts	Standard - Aqua	↔ 25 ↑ 23 ↗ 13	↔ 10 ↑ 9 ↗ 5	2x E14 - 40 W
46	CB 0914/02/009	Nickel	No Glass Parts	Standard - Sapphire	Ø 70 ↑ 51	Ø 28 ↑ 20	9x E14 - 40 W
47	CB 0914/02/004	Nickel	No Glass Parts	Standard - Sapphire	Ø 43 ↑ 45	Ø 17 ↑ 18	4x E14 - 40 W
48	WB 0914/02/002	Nickel	No Glass Parts	Standard - Sapphire	↔ 25 ↑ 23 ↗ 13	↔ 10 ↑ 9 ↗ 5	2x E14 - 40 W
49	CB 0914/02/009	Nickel	No Glass Parts	Standard - Green	Ø 70 ↑ 51	Ø 28 ↑ 20	9x E14 - 40 W
50	CB 0914/02/004	Nickel	No Glass Parts	Standard - Green	Ø 43 ↑ 45	Ø 17 ↑ 18	4x E14 - 40 W
51	WB 0914/02/002	Nickel	No Glass Parts	Standard - Green	↔ 25 ↑ 23 ↗ 13	↔ 10 ↑ 9 ↗ 5	2x E14 - 40 W
52	CB 0914/02/009	Nickel	No Glass Parts	Standard - Light Amethyst	Ø 70 ↑ 51	Ø 28 ↑ 20	9x E14 - 40 W
53	CB 0914/02/004	Nickel	No Glass Parts	Standard - Light Amethyst	Ø 43 ↑ 45	Ø 17 ↑ 18	4x E14 - 40 W
54	WB 0914/02/002	Nickel	No Glass Parts	Standard - Light Amethyst	↔ 25 ↑ 23 ↗ 13	↔ 10 ↑ 9 ↗ 5	2x E14 - 40 W



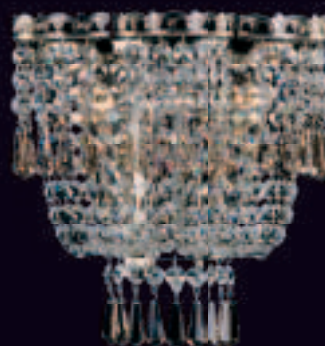
Popular lighting fixtures in new colors



37



47



42

We offer the depicted lighting fixtures' trimmings in Rosaline, Sapphire, Light Smoky, Green, Light Amethyst and Aqua.

	Art. Number	Metal Finish	Color of Glass	Trimmings	Dimensions (cm)	Dimensions (in)	Wattage
37	CB 0914/02/009	Nickel	No Glass Parts	Standard - Rosaline	Ø 70 ↑ 51	Ø 28 ↑ 20	9x E14 - 40 W
42	WB 0914/02/002	Nickel	No Glass Parts	Standard - Light Smoky	↔ 25 ↑ 23 ↗ 13	↔ 10 ↑ 9 ↗ 5	2x E14 - 40 W
47	CB 0914/02/004	Nickel	No Glass Parts	Standard - Sapphire	Ø 43 ↑ 45	Ø 17 ↑ 18	4x E14 - 40 W



Popular lighting fixtures in new colors



Rosaline



Jonquil



Light Smoky



Green



Light Amethyst



Light Topaz

	Art. Number	Metal Finish	Color of Glass	Trimmings	Dimensions (cm)	Dimensions (in)	Wattage
55	CB 0914/02/009	Brass	No Glass Parts	Standard - Rosaline	Ø 70 ↑ 51	Ø 28 ↑ 20	9x E14 - 40 W
56	CB 0914/02/004	Brass	No Glass Parts	Standard - Rosaline	Ø 43 ↑ 45	Ø 17 ↑ 18	4x E14 - 40 W
57	WB 0914/02/002	Brass	No Glass Parts	Standard - Rosaline	↔ 25 ↑ 23 ↗ 13	↔ 10 ↑ 9 ↗ 5	2x E14 - 40 W
58	CB 0914/02/009	Brass	No Glass Parts	Standard - Light Smoky	Ø 70 ↑ 51	Ø 28 ↑ 20	9x E14 - 40 W
59	CB 0914/02/004	Brass	No Glass Parts	Standard - Light Smoky	Ø 43 ↑ 45	Ø 17 ↑ 18	4x E14 - 40 W
60	WB 0914/02/002	Brass	No Glass Parts	Standard - Light Smoky	↔ 25 ↑ 23 ↗ 13	↔ 10 ↑ 9 ↗ 5	2x E14 - 40 W
61	CB 0914/02/009	Brass	No Glass Parts	Standard - Light Topaz	Ø 70 ↑ 51	Ø 28 ↑ 20	9x E14 - 40 W
62	CB 0914/02/004	Brass	No Glass Parts	Standard - Light Topaz	Ø 43 ↑ 45	Ø 17 ↑ 18	4x E14 - 40 W
63	WB 0914/02/002	Brass	No Glass Parts	Standard - Light Topaz	↔ 25 ↑ 23 ↗ 13	↔ 10 ↑ 9 ↗ 5	2x E14 - 40 W
64	CB 0914/02/009	Brass	No Glass Parts	Standard - Jonquil	Ø 70 ↑ 51	Ø 28 ↑ 20	9x E14 - 40 W
65	CB 0914/02/004	Brass	No Glass Parts	Standard - Jonquil	Ø 43 ↑ 45	Ø 17 ↑ 18	4x E14 - 40 W
66	WB 0914/02/002	Brass	No Glass Parts	Standard - Jonquil	↔ 25 ↑ 23 ↗ 13	↔ 10 ↑ 9 ↗ 5	2x E14 - 40 W
67	CB 0914/02/009	Brass	No Glass Parts	Standard - Green	Ø 70 ↑ 51	Ø 28 ↑ 20	9x E14 - 40 W
68	CB 0914/02/004	Brass	No Glass Parts	Standard - Green	Ø 43 ↑ 45	Ø 17 ↑ 18	4x E14 - 40 W
69	WB 0914/02/002	Brass	No Glass Parts	Standard - Green	↔ 25 ↑ 23 ↗ 13	↔ 10 ↑ 9 ↗ 5	2x E14 - 40 W
70	CB 0914/02/009	Brass	No Glass Parts	Standard - Light Amethyst	Ø 70 ↑ 51	Ø 28 ↑ 20	9x E14 - 40 W
71	CB 0914/02/004	Brass	No Glass Parts	Standard - Light Amethyst	Ø 43 ↑ 45	Ø 17 ↑ 18	4x E14 - 40 W
72	WB 0914/02/002	Brass	No Glass Parts	Standard - Light Amethyst	↔ 25 ↑ 23 ↗ 13	↔ 10 ↑ 9 ↗ 5	2x E14 - 40 W



Popular lighting fixtures in new colors



61



68



72

We offer the depicted lighting fixtures' trimmings in Rosaline, Jonquil, Light Smoky, Green, Light Amethyst and Light Topaz.

	Art. Number	Metal Finish	Color of Glass	Trimmings	Dimensions (cm)	Dimensions (in)	Wattage
61	CB 0914/02/009	Brass	No Glass Parts	Standard - Light Topaz	Ø 70 ↑ 51	Ø 28 ↑ 20	9x E14 - 40 W
68	CB 0914/02/004	Brass	No Glass Parts	Standard - Green	Ø 43 ↑ 45	Ø 17 ↑ 18	4x E14 - 40 W
72	WB 0914/02/002	Brass	No Glass Parts	Standard - Light Amethyst	↔ 25 ↑ 23 ↗ 13	↔ 10 ↑ 9 ↗ 5	2x E14 - 40 W



Art Number	Metal Finish	Color of Glass	Trimmings	Previous Number	Dimensions cm	Dimensions in	Wattage	Weight	Cube m ³	Page
39	WB 0914 /02/002	No Glass Parts	Standard - Rosaline	25 0922 002 04 00 02 01	↔ 25 ↑ 23 ↗ 13	↔ 10 ↑ 9 ↗ 5	2x E14 - 40W	1,5	0,025	18
54	WB 0914 /02/002	No Glass Parts	Standard - Light Amethyst	25 0922 002 04 00 03 01	↔ 25 ↑ 23 ↗ 13	↔ 10 ↑ 9 ↗ 5	2x E14 - 40W	1,5	0,025	18
51	WB 0914 /02/002	No Glass Parts	Standard - Green	25 0922 002 04 00 04 01	↔ 25 ↑ 23 ↗ 13	↔ 10 ↑ 9 ↗ 5	2x E14 - 40W	1,5	0,025	18
42	WB 0914 /02/002	No Glass Parts	Standard - Light Smoky	25 0922 002 04 00 05 01	↔ 25 ↑ 23 ↗ 13	↔ 10 ↑ 9 ↗ 5	2x E14 - 40W	1,5	0,025	18
48	WB 0914 /02/002	No Glass Parts	Standard - Sapphire	25 0922 002 04 00 06 01	↔ 25 ↑ 23 ↗ 13	↔ 10 ↑ 9 ↗ 5	2x E14 - 40W	1,5	0,025	18
45	WB 0914 /02/002	No Glass Parts	Standard - Aqua	25 0922 002 04 00 09 01	↔ 25 ↑ 23 ↗ 13	↔ 10 ↑ 9 ↗ 5	2x E14 - 40W	1,5	0,025	18
57	WB 0914 /02/002	Brass	Standard - Rosaline	25 0922 002 07 00 02 01	↔ 25 ↑ 23 ↗ 13	↔ 10 ↑ 9 ↗ 5	2x E14 - 40W	1,5	0,025	20
72	WB 0914 /02/002	No Glass Parts	Standard - Light Amethyst	25 0922 002 07 00 03 01	↔ 25 ↑ 23 ↗ 13	↔ 10 ↑ 9 ↗ 5	2x E14 - 40W	1,5	0,025	20
69	WB 0914 /02/002	No Glass Parts	Standard - Green	25 0922 002 07 00 04 01	↔ 25 ↑ 23 ↗ 13	↔ 10 ↑ 9 ↗ 5	2x E14 - 40W	1,5	0,025	20
60	WB 0914 /02/002	No Glass Parts	Standard - Light Smoky	25 0922 002 07 00 05 01	↔ 25 ↑ 23 ↗ 13	↔ 10 ↑ 9 ↗ 5	2x E14 - 40W	1,5	0,025	20
63	WB 0914 /02/002	No Glass Parts	Standard - Light Topaz	25 0922 002 07 00 07 01	↔ 25 ↑ 23 ↗ 13	↔ 10 ↑ 9 ↗ 5	2x E14 - 40W	1,5	0,025	20
66	WB 0914 /02/002	No Glass Parts	Standard - Jonquil	25 0922 002 07 00 08 01	↔ 25 ↑ 23 ↗ 13	↔ 10 ↑ 9 ↗ 5	2x E14 - 40W	1,5	0,025	20
38	CB 0914 /02/004	No Glass Parts	Standard - Rosaline	45 0914 004 04 00 21 01	∅ 43 ↑ 45	∅ 17 ↑ 18	4x E14 - 40W	4	0,044	18
44	CB 0914 /02/004	No Glass Parts	Standard - Aqua	45 0914 004 04 00 22 01	∅ 43 ↑ 45	∅ 17 ↑ 18	4x E14 - 40W	4	0,044	18
50	CB 0914 /02/004	No Glass Parts	Standard - Green	45 0914 004 04 00 24 01	∅ 43 ↑ 45	∅ 17 ↑ 18	4x E14 - 40W	4	0,044	18
41	CB 0914 /02/004	No Glass Parts	Standard - Light Smoky	45 0914 004 04 00 26 01	∅ 43 ↑ 45	∅ 17 ↑ 18	4x E14 - 40W	4	0,044	18
47	CB 0914 /02/004	No Glass Parts	Standard - Sapphire	45 0914 004 04 00 27 01	∅ 43 ↑ 45	∅ 17 ↑ 18	4x E14 - 40W	4	0,044	18
53	CB 0914 /02/004	No Glass Parts	Standard - Light Amethyst	45 0914 004 04 00 28 01	∅ 43 ↑ 45	∅ 17 ↑ 18	4x E14 - 40W	4	0,044	18
62	CB 0914 /02/004	No Glass Parts	Standard - Light Topaz	45 0914 004 07 00 23 01	∅ 43 ↑ 45	∅ 17 ↑ 18	4x E14 - 40W	4	0,044	20
56	CB 0914 /02/004	No Glass Parts	Standard - Rosaline	45 0914 004 07 00 21 01	∅ 43 ↑ 45	∅ 17 ↑ 18	4x E14 - 40W	4	0,044	20
68	CB 0914 /02/004	No Glass Parts	Standard - Green	45 0914 004 07 00 24 01	∅ 43 ↑ 45	∅ 17 ↑ 18	4x E14 - 40W	4	0,044	20
65	CB 0914 /02/004	No Glass Parts	Standard - Jonquil	45 0914 004 07 00 25 01	∅ 43 ↑ 45	∅ 17 ↑ 18	4x E14 - 40W	4	0,044	20
59	CB 0914 /02/004	No Glass Parts	Standard - Light Smoky	45 0914 004 07 00 26 01	∅ 43 ↑ 45	∅ 17 ↑ 18	4x E14 - 40W	4	0,044	20
71	CB 0914 /02/004	No Glass Parts	Standard - Light Amethyst	45 0914 004 07 00 28 01	∅ 43 ↑ 45	∅ 17 ↑ 18	4x E14 - 40W	4	0,044	20
37	CB 0914 /02/009	No Glass Parts	Standard - Rosaline	45 0914 009 04 00 21 01	∅ 70 ↑ 51	∅ 28 ↑ 20	9x E14 - 40W	10	0,131	18
43	CB 0914 /02/009	No Glass Parts	Standard - Aqua	45 0914 009 04 00 22 01	∅ 70 ↑ 51	∅ 28 ↑ 20	9x E14 - 40W	10	0,131	18
49	CB 0914 /02/009	No Glass Parts	Standard - Green	45 0914 009 04 00 24 01	∅ 70 ↑ 51	∅ 28 ↑ 20	9x E14 - 40W	10	0,131	18
40	CB 0914 /02/009	No Glass Parts	Standard - Light Smoky	45 0914 009 04 00 26 01	∅ 70 ↑ 51	∅ 28 ↑ 20	9x E14 - 40W	10	0,131	18
46	CB 0914 /02/009	No Glass Parts	Standard - Sapphire	45 0914 009 04 00 27 01	∅ 70 ↑ 51	∅ 28 ↑ 20	9x E14 - 40W	10	0,131	18
52	CB 0914 /02/009	No Glass Parts	Standard - Light Amethyst	45 0914 009 04 00 28 01	∅ 70 ↑ 51	∅ 28 ↑ 20	9x E14 - 40W	10	0,131	18
61	CB 0914 /02/009	No Glass Parts	Standard - Light Topaz	45 0914 009 07 00 23 01	∅ 70 ↑ 51	∅ 28 ↑ 20	9x E14 - 40W	10	0,131	20
55	CB 0914 /02/009	No Glass Parts	Standard - Rosaline	45 0914 009 07 00 21 01	∅ 70 ↑ 51	∅ 28 ↑ 20	9x E14 - 40W	10	0,131	20
67	CB 0914 /02/009	No Glass Parts	Standard - Green	45 0914 009 07 00 24 01	∅ 70 ↑ 51	∅ 28 ↑ 20	9x E14 - 40W	10	0,131	20
64	CB 0914 /02/009	No Glass Parts	Standard - Jonquil	45 0914 009 07 00 25 01	∅ 70 ↑ 51	∅ 28 ↑ 20	9x E14 - 40W	10	0,131	20
58	CB 0914 /02/009	No Glass Parts	Standard - Light Smoky	45 0914 009 07 00 26 01	∅ 70 ↑ 51	∅ 28 ↑ 20	9x E14 - 40W	10	0,131	20
70	CB 0914 /02/009	No Glass Parts	Standard - Light Amethyst	45 0914 009 07 00 28 01	∅ 70 ↑ 51	∅ 28 ↑ 20	9x E14 - 40W	10	0,131	20
36	WB 0933 /02/002	No Glass Parts	Standard - Jonquil	25 0934 002 07 00 03 22	↔ 25 ↑ 21 ↗ 13	↔ 10 ↑ 8 ↗ 5	2x E14 - 40W	1	0,025	16
33	WB 0933 /02/002	No Glass Parts	Standard - Green	25 0934 002 07 00 04 22	↔ 25 ↑ 21 ↗ 13	↔ 10 ↑ 8 ↗ 5	2x E14 - 40W	1	0,025	16
30	WB 0933 /02/002	No Glass Parts	Standard - Light Topaz	25 0934 002 07 00 05 22	↔ 25 ↑ 21 ↗ 13	↔ 10 ↑ 8 ↗ 5	2x E14 - 40W	1	0,025	16
32	CB 0933 /02/004	No Glass Parts	Standard - Green	45 0932 004 07 00 02 22	∅ 40 ↑ 39	∅ 16 ↑ 15	4x E14 - 40W	3	0,114	16
29	CB 0933 /02/004	No Glass Parts	Standard - Light Topaz	45 0932 004 07 00 05 22	∅ 40 ↑ 39	∅ 16 ↑ 15	4x E14 - 40W	3	0,114	16
35	CB 0933 /02/004	No Glass Parts	Standard - Jonquil	45 0932 004 07 00 06 22	∅ 40 ↑ 39	∅ 16 ↑ 15	4x E14 - 40W	3	0,114	16
28	BB 0933 /02/006	No Glass Parts	Standard - Light Topaz	45 0933 006 07 00 02 22	∅ 40 ↑ 65	∅ 16 ↑ 26	6x E14 - 40W	5	0,174	16
34	BB 0933 /02/006	No Glass Parts	Standard - Jonquil	45 0933 006 07 00 03 22	∅ 40 ↑ 65	∅ 16 ↑ 26	6x E14 - 40W	5	0,174	16
31	BB 0933 /02/006	No Glass Parts	Standard - Green	45 0933 006 07 00 04 22	∅ 40 ↑ 65	∅ 16 ↑ 26	6x E14 - 40W	5	0,174	16
6	CB 1167 /00/005	No Glass Parts	Standard	45 1167 005 07 00 00 35	∅ 47,5 ↑ 98	∅ 19 ↑ 39	6x G9 - 40W	15	0,133	4

26	BB	1168	/00/021	Brass	Crystal	Standard - Bermuda, Maree Plated	45 1168 021 07 01 00 35	Ø 110	↑ 60	Ø 43	↑ 24	21x E14 - 40W	40	0,999	14
2	CB	1171	/00/006	Brass	No Glass Parts	Standard - Rose	55 1171 006 07 00 00 35	Ø 58	↑ 30	Ø 23	↑ 12	6x E14 - 40W	5	0,138	2
21	CB	1173	/00/003	Chromium	Cry Frost	Traditional - Rose	55 1173 003 06 24 00 35	Ø 60	↑ 35	Ø 24	↑ 14	3x E14 - 40W	4	0,289	10
1	CB	1174	/00/006	Brass	Rose	Standard	45 1174 006 07 15 00 35	Ø 50	↑ 40	Ø 20	↑ 16	6x E14 - 40W	5,5	0,097	2
4	CB	1175	/01/006	Brass	No Glass Parts	Standard - Sunlight+Dark Smoky	55 1175 006 07 00 01 35	Ø 52	↑ 50	Ø 20	↑ 20	6x E14 - 40W	6	0,138	3
3	CB	1175	/00/006	Brass	No Glass Parts	Standard - Dark Smoky	55 1175 006 07 00 00 35	Ø 52	↑ 50	Ø 20	↑ 20	6x E14 - 40W	6	0,19	3
5	CB	1176	/00/006	Brass	Crystal	Standard - Siam	45 1176 006 07 01 00 35	Ø 45	↑ 60	Ø 18	↑ 24	6x E14 - 40W	6	0,083	4
23	CB	1177	/00/006	Brass	No Glass Parts	Standard - Jet+Jonquil	45 1177 006 07 00 00 35	Ø 56	↑ 50	Ø 22	↑ 20	6x E14 - 40W	9	0,138	12
27	CB	1178	/00/008	Chromium	No Glass Parts	Standard - Light Amethyst	45 1178 008 06 00 00 35	Ø 60	↑ 42	Ø 24	↑ 17	8x G9 - 40W	11	0,176	15
25	BB	1179	/00/003	Nickel	Crystal	Standard - Light Siam	55 1179 003 04 01 00 35	Ø 60	↑ 57	Ø 24	↑ 22	3x E14 - 40W	4	0,343	13
24	BB	1179	/00/003	Nickel	Crystal	Standard - Jet	55 1179 003 04 01 01 35	Ø 60	↑ 57	Ø 24	↑ 22	3x E14 - 40W	4	0,343	13
7	CB	5002	/00/001	Brass	No Glass Parts	Standard	58 5002 001 07 00 00 35	Ø 22	↑ 38	Ø 9	↑ 15	1x G9 - 60W	2,75	0,053	5
8	CB	5002	/01/001	Nickel	No Glass Parts	Standard - Light Amethyst	58 5002 001 04 00 01 35	Ø 22	↑ 56	Ø 9	↑ 22	1x G9 - 60W	2,75	0,053	5
9	CB	5003	/00/003	Brass	Crystal	Standard - Dark Topaz	58 5003 003 07 01 00 35	Ø 30	↑ 52	Ø 12	↑ 20	3x G9 - 40W	4	0,119	5
17	CB	5004	/00/006	Nickel	No Glass Parts	Standard	68 5004 006 04 00 00 35	Ø 50	↑ 65	Ø 20	↑ 26	6x G9 - 40W	7,5	0,343	9
18	AB	5005	/00/007	Nickel	Crystal	Standard	18 5005 007 04 01 00 35	Ø 62	↑ 62	Ø 24	↑ 24	7x G9 - 40W	6,5	0,138	9
20	WD	5006	/00/001	Chromium	Cry Frost	Standard - Dark Sapphire	28 5006 001 06 24 00 35	Ø 28	↑ 28	↗ 12	↗ 11	1x G9 - 25W	0,75	0,021	10
19	PD	5006	/00/001	Chromium	Cry Frost	Standard - Dark Sapphire	68 5006 001 06 24 00 35	Ø 28	↑ 25+L	Ø 11	↑ 10+L	1x G9 - 25W	1,75	0,034	10
22	PD	5007	/00/003	Nickel	No Glass Parts	Standard - Light Amethyst	68 5007 003 04 00 00 35	Ø 80	↑ 80+L	Ø 31	↑ 31+L	3x G9 - 40W	7	1,587	11
15	CB	5009	/01/009	Nickel	Crystal	No Trimmings	68 5009 009 04 01 00 00	Ø 60	↑ 60	Ø 24	↑ 24	9x G9 - 40W	9,5	0,242	8
16	CB	5009	/01/009	Brass	Crystal	No Trimmings	68 5009 009 07 01 00 00	Ø 60	↑ 60	Ø 24	↑ 24	9x G9 - 40W	9,5	0,242	8
10	PB	5020	/00/001	Nickel	No Glass Parts	Standard	65 5020 001 04 00 00 35	Ø 38	↑ 30	Ø 15	↑ 12	1x E14-Bellalux - 40W	1,75	0,105	6
11	PB	5020	/01/001	Nickel	No Glass Parts	Standard	65 5020 001 04 00 01 35	Ø 38	↑ 32	Ø 15	↑ 13	1x E14-Bellalux - 40W	1,5	0,105	6
12	PB	5020	/02/001	Nickel	No Glass Parts	Standard	65 5020 001 04 00 02 35	Ø 38	↑ 45	Ø 15	↑ 18	1x E14-Bellalux - 40W	1,5	0,105	6
13	PB	5318	/00/008	Brass	No Glass Parts	Standard	69 5318 008 07 00 00 35	Ø 50	↑ 35+L	Ø 20	↑ 14+L	8x G4 - 20W	10	0,082	7
14	PB	5319	/00/008	Stainless	No Glass Parts	Standard - Lime Yellow	69 5319 008 99 00 00 35	Ø 30	↑ 40+L	Ø 12	↑ 16+L	8x G4 reflector- 20W	12	0,085	7

THE EXAMPLE OF NUMBERING

C B 0914 / 02 / 004

1 2 3 4 5

1 Sort

- A - Arm Type Chandeliers
- W - Wall Brackets
- T - Table Lamps
- C - Ceiling Chandeliers
- B - Basket Type Chandeliers
- P - Pendant Type Chandeliers
- F - Floor Lamps

2 Category

- S - Crystal Symphony
- C - Bohemian Classic
- E - Enamel Romance
- M - Maria Theresa
- L - Light Elegance
- R - Royal Heritage
- B - Brilliant
- D - Contemporary Lighting

3 Type number

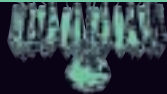
4 Variant

5 Number of sources of light

Manufacturer reserves the right to effect minor design changes to its products.

L = max 100 cm

- Brass
- Stainless
- Nickel
- Chromium
- Cry Frost
- Polished Brass
- Polished Stainless
- Nickel Plated
- Chromium Plated
- Crystal Frosted



PRECIOSA CUSTOMER CENTRE

Opletalova 3197
466 67 Jablonec nad Nisou

Czech Republic

Tel.: +420 488 115 555
Fax: +420 488 115 665
E-mail: info@preciosa.com

PRECIOSA INT'L (HK) LTD.

Unit 2016 Chevalier Commercial Centre
8 Wang Hoi Road, Kowloon Bay
Hong Kong

S.A.R.

Tel.: +852 2753 9595
Fax: +852 2753 9997
E-mail: info@hk.preciosa.com

PRECIOSA (SG) PTE. LTD.

51 Goldhill Plaza #08-08/09

Singapore 308900

Tel.: +65 6256 2212
Fax: +65 6256 1101
E-mail: sales@sg.preciosa.com

PRECIOSA INTERNATIONAL, INC.

2316 Wehrle Drive
Williamsville, NY 14221

U.S.A

Tel.: +1 716 626 9759
Fax: +1 716 626 9758
E-mail: sales@ny.preciosa.com

PRECIOSA Leuchten GmbH

Hauptstr. 37
D-95676 Wiesau

Germany

Tel.: +49 - 96 - 34 91 59 430
Fax: +49 - 96 - 34 91 59 460
E-mail: sales@leuchten.preciosa.com

PRECIOSA GULF, FZCO

P.O.Box 18185
Dubai

United Arab Emirates

Tel.: +971 48 838 473
Fax: +971 48 837 913
E-mail: sales@gulf.preciosa.com

PRECIOSA INTERNATIONAL, s.r.o.

Kalvínske námestie 2, 934 01 Levice

Slovak Republic

Tel.: +421 366 224 124
Fax: +421 366 224 124
E-mail: sales@sk.preciosa.com

PRECIOSA CENTR, A. O.

Office 150, Entr. 7
4th Tverskaya - Yamskaya Str., 33/39
125010 Moscow

Russia

Tel./Fax: +7 495 961 31 07
+7 495 961 31 08
E-mail: infocentr@preciosa.ru

www.preciosa.com

