



PRECIOSA

Brilliant

RESIDENTIAL
LIGHTING
FIXTURES

NEW 2006/I.

Dear Friends,

Your suggestions together with modern trends in interior design always inspire us to design new types of lighting fixtures. The catalog you have just opened provides clear evidence of that.

On the following pages, we present a collection of novelties belonging to the 'Brilliant' line of lighting fixtures. These are characterized by a wide range of PRECIOSA machine-cut chandelier trimmings of the highest quality, lending the fixtures an admirable crystal glitter. While designing this collection, we followed three main directions: First, the use of new color shades for chandelier trimmings (examples of these are included on pages 12, 13, 16 and 17), second, the development of new components, so far not used in our lighting fixtures, such as lamp shades made from coffin stones (for these see pages 4 and 5), bowls made from chandelier trimmings (see page 9), and 'lace' components also made from chandelier trimmings and used as an original design element (see pages 10 and 19), and third, the commitment to constantly extend our range of products by developing new types of lighting fixtures based on our favorite designs (for these see pages 6, 7, 8, 10, 11, 18, 20 and 21).

All our lighting fixtures can be used in both modern and classical interiors, which is the common denominator for these fixtures' design.

The following pages bear witness to the meticulous work we have put into creating the design of our new lighting fixtures. We believe you will select the right one from our new offer to match your interior.

Yours sincerely



Jaroslav Demel
Vice-president of Sales
Preciosa - Lustry, a.s.



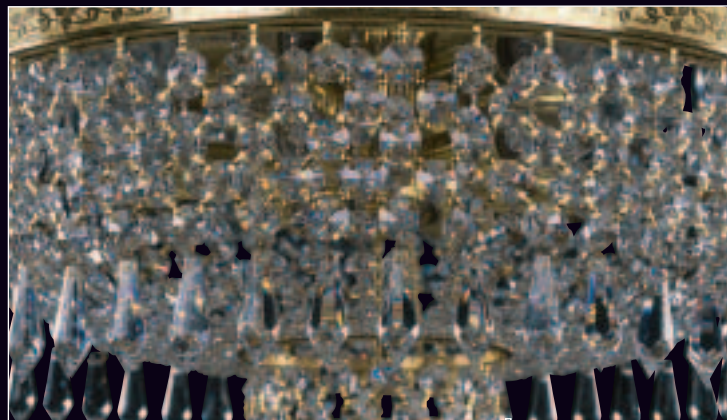
New design elements of lighting fixtures



Original lampshades made from crystal chandelier trimmings



Original crystal chandelier bowls

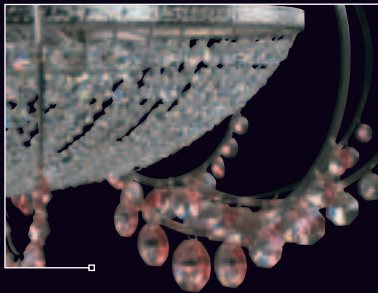


A crystal "lace" made from chandelier trimmings

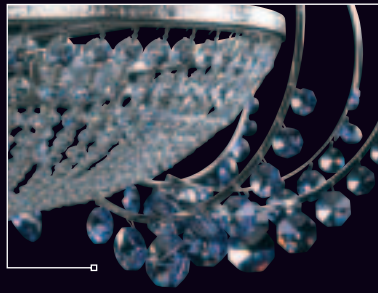


New design elements of lighting fixtures

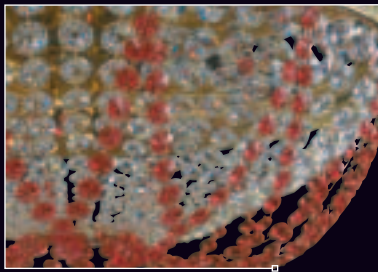
New colors of chandelier trimmings:
Amethyst, Peridot, Rose, Sahara, Sapphire, Siam, Light Amethyst



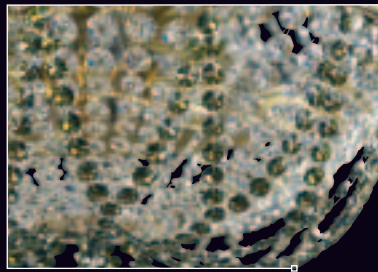
Rose



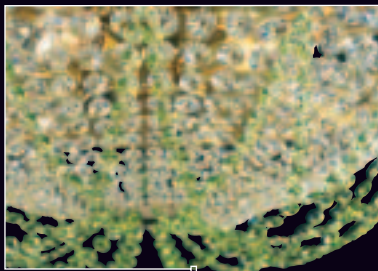
Sapphire



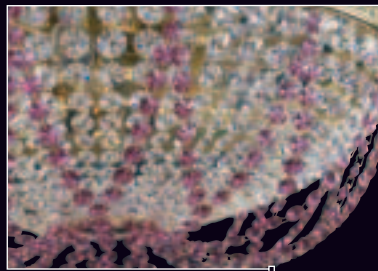
Siam



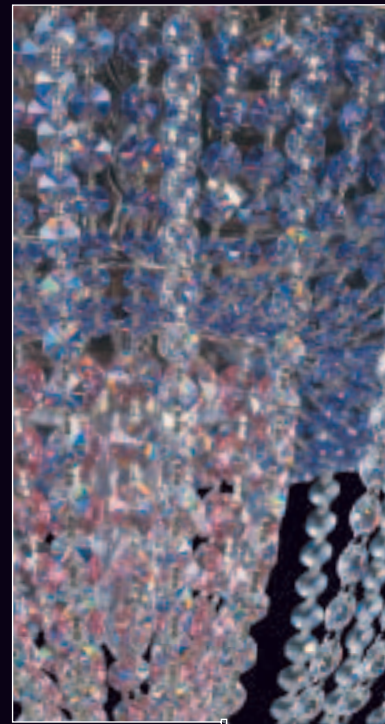
Sahara



Peridot



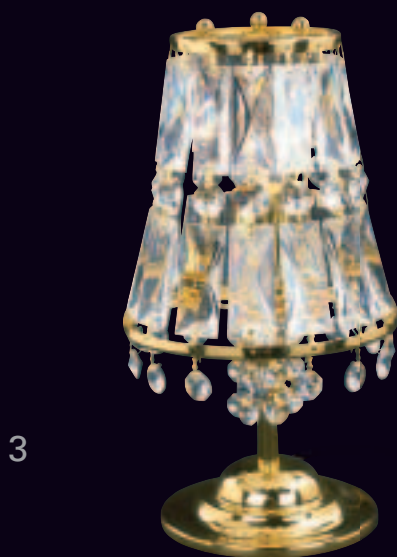
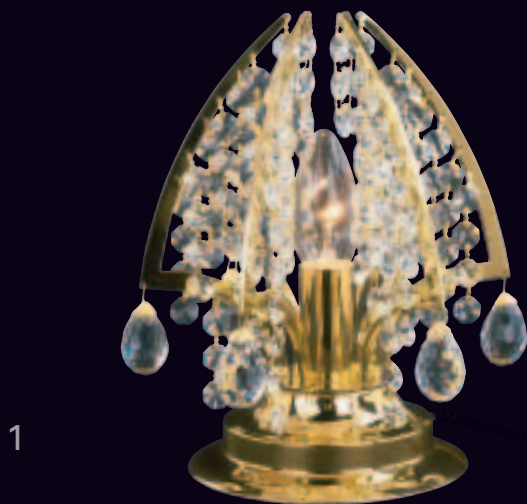
Amethyst



Sapphire & Light Amethyst



Brilliant



	Art. Number	Metal Finish	Color of Glass	Trimmings	Dimensions (cm)	Wattage
1	TB 1121/00/001	Polished Brass	No Glass Parts	Standard	Ø 22 ↑ 24	1x E14-40 W
2	TB 1122/00/001	Polished Brass	No Glass Parts	Standard	Ø 15 ↑ 29	1x E14-40 W
3	TB 1125/00/001	Polished Brass	No Glass Parts	Standard	Ø 15 ↑ 29	1x E14-40 W



Brilliant



4



5

	Art. Number	Metal Finish	Color of Glass	Trimmings	Dimensions (cm)	Wattage
4	AB 1125/00/006	Polished Brass	Crystal	Standard	Ø 68 ↑ 47	6x E14-40 W
5	WB 1125/00/001	Polished Brass	Crystal	Standard	↔ 12 ↑ 32 ↗ 21	1x E14-40 W



Brilliant



6



7

	Art. Number	Metal Finish	Color of Glass	Trimmings	Dimensions (cm)	Wattage
6	AB 1085/01/005	Polished Brass	Cry + Cry Frost	Standard	Ø 52 ↑ 54	5x E14-40 W
7	WB 1085/01/002	Polished Brass	Cry + Cry Frost	Standard	↔ 38 ↑ 30 ↗ 20	2x E14-40 W



Brilliant



8

	Art. Number	Metal Finish	Color of Glass	Trimmings	Dimensions (cm)	Wattage
8	AB 1085/01/012	Polished Brass	Cry + Cry Frost	Standard	Ø 64 ↑ 62	12x E14-40 W



Brilliant



9

	Art. Number	Metal Finish	Color of Glass	Trimmings	Dimensions (cm)	Wattage
9	AB 1085/01/008	Polished Brass	Cry + Cry Frost	Standard	Ø 52 ↑ 54	8x E14-40 W



Brilliant



10

	Art. Number	Metal Finish	Color of Glass	Trimmings	Dimensions (cm)	Wattage
10	AB 1116/00/006	Polished Brass	No Glass Parts	Standard	Ø 55 ↑ 55	6x E14-40 W



Brilliant



11

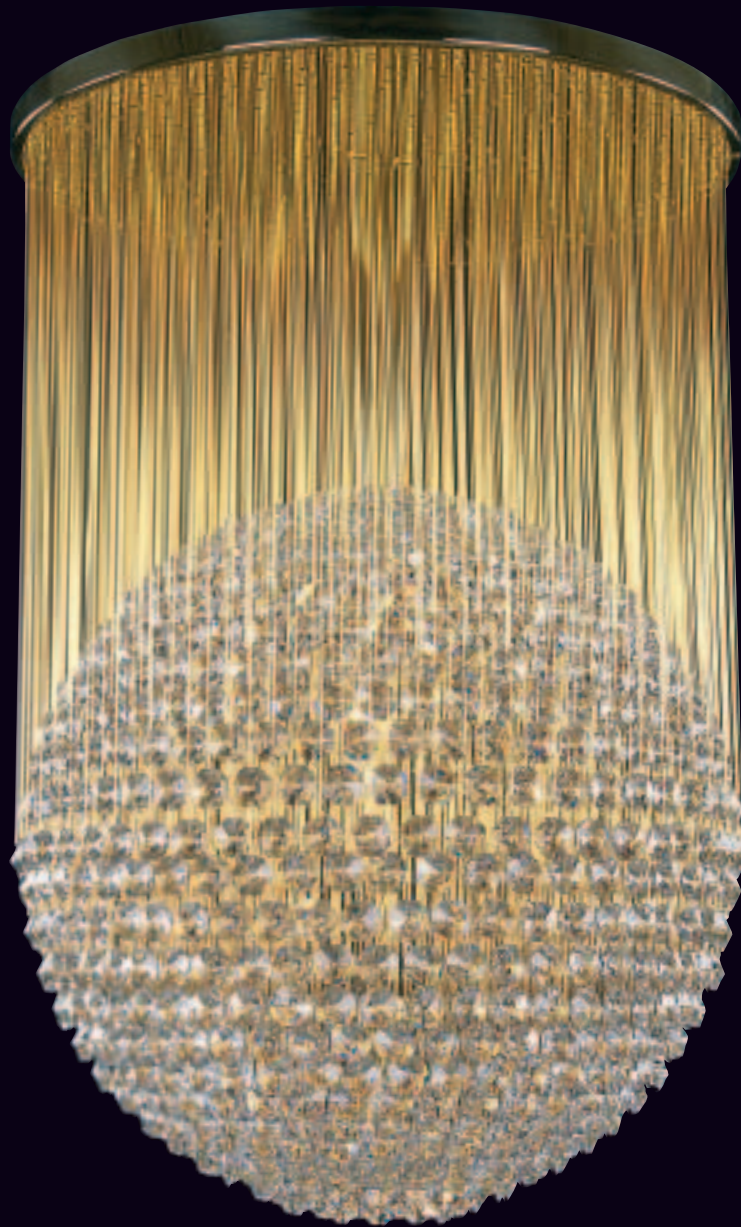


12

	Art. Number	Metal Finish	Color of Glass	Trimmings	Dimensions (cm)	Wattage
11	CB 1427/00/006	Polished Brass	Crystal	Standard	Ø 55 ↑ 31	6x G9-40 W
12	CB 1102/01/003	Polished Brass	No Glass Parts	Standard	Ø 35 ↑ 27	3x E14-40 W



Brilliant



13

	Art. Number	Metal Finish	Color of Glass	Trimmings	Dimensions (cm)	Wattage
13	CB 0938/01/003	Part 24K Gold	No Glass Parts	Standard	Ø 50 ↑ 76	3x E14-40 W



Brilliant



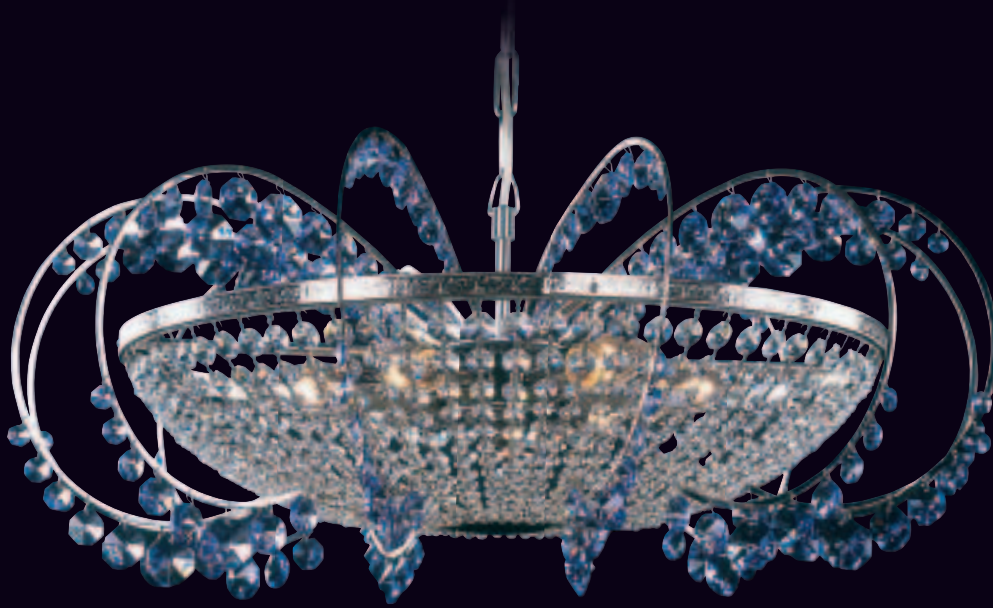
14



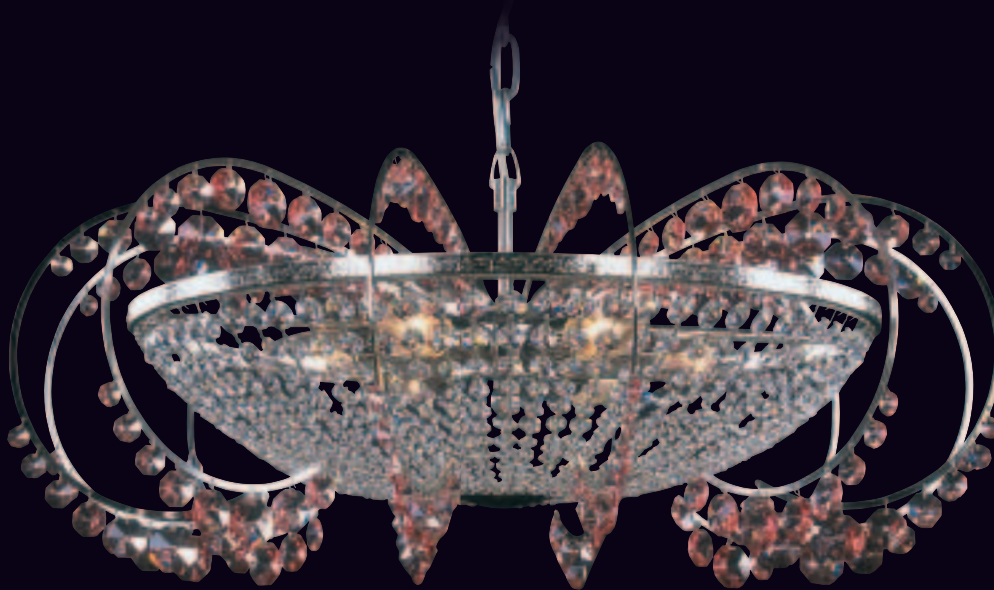
15

	Art. Number	Metal Finish	Color of Glass	Trimmings	Dimensions (cm)	Wattage
14	CB 0991/06/006	Nickel Plated	Mirror	Standard-Rose	Ø 50 ↑ 47	6x E14-40 W
15	CB 1117/00/006	Nickel Plated	No Glass Parts	Standard-Amethyst-Sapphire	Ø 47,5 ↑ 33	6x E14-40 W





16



17

	Art. Number	Metal Finish	Color of Glass	Trimmings	Dimensions (cm)	Wattage
16	CB 1119/00/006	Nickel Plated	No Glass Parts	Standard-Sapphire	Ø 70 ↑ 55	6x E14-40 W
17	CB 1119/00/006	Nickel Plated	No Glass Parts	Standard-Rose	Ø 70 ↑ 55	6x E14-40 W



Brilliant



19



18



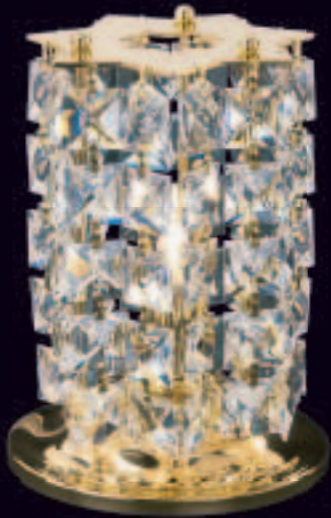
20

	Art. Number	Metal Finish	Color of Glass	Trimmings	Dimensions (cm)	Wattage
18	CB 1115/00/001	Nickel Plated	No Glass Parts	Standard	Ø 19 ↑ 27	1x E14-40 W
19	CB 1115/01/001	Polished Brass	No Glass Parts	Standard	Ø 22 ↑ 30	1x E14-40 W
20	BB 1120/00/001	Polished Brass	No Glass Parts	Standard	Ø 21 ↑ 21	1x E14-40 W

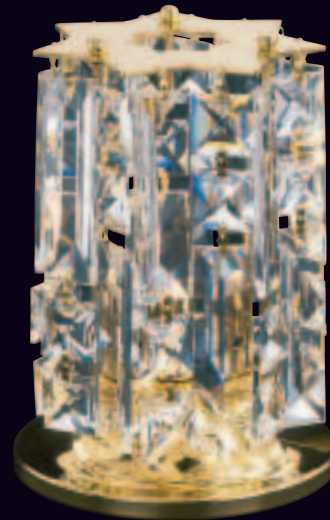


Brilliant

21



22



23



	Art. Number	Metal Finish	Color of Glass	Trimmings	Dimensions (cm)	Wattage
21	TB 1123/00/001	Polished Brass	No Glass Parts	Standard	Ø 13 ↑ 17	1x G9-40 W
22	TB 1123/01/001	Polished Brass	No Glass Parts	Standard	Ø 13 ↑ 17	1x G9-40 W
23	TB 1123/02/001	Polished Brass	No Glass Parts	Standard	Ø 13 ↑ 17	1x G9-40 W



Brilliant



24



25

	Art. Number	Metal Finish	Color of Glass	Trimmings	Dimensions (cm)	Wattage
24	CB 0991/05/006	Polished Brass	Mirror	Standard-Sahara	Ø 50 ↑ 47	6x E14-40 W
25	CB 0991/05/006	Polished Brass	Mirror	Standard-Peridot	Ø 50 ↑ 47	6x E14-40 W





26



27

	Art. Number	Metal Finish	Color of Glass	Trimmings	Dimensions (cm)	Wattage
26	CB 0991/05/006	Polished Brass	Mirror	Standard-Siam	Ø 50 ↑ 47	6x E14-40 W
27	CB 0991/05/006	Polished Brass	Mirror	Standard-Amethyst	Ø 50 ↑ 47	6x E14-40 W



Brilliant



28

	Art. Number	Metal Finish	Color of Glass	Trimmings	Dimensions (cm)	Wattage
28	CB 1081/00/009	Polished Brass	No Glass Parts	Standard	Ø 74 ↑ 44	9x E14-40 W



Brilliant



29



30

	Art. Number	Metal Finish	Color of Glass	Trimmings	Dimensions (cm)	Wattage
29	CB 0757/02/006	Polished Brass	No Glass Parts	Standard	Ø 475 ↑ 35	6x E14-40 W
30	CB 1118/00/006	Polished Brass	No Glass Parts	Standard	Ø 50 ↑ 50	6x E14-40 W



Brilliant



31

	Art. Number	Metal Finish	Color of Glass	Trimmings	Dimensions (cm)	Wattage
31	CB 0914/00/020	Polished Brass	No Glass Parts	Standard	Ø 150 ↑ 75	20x E14-40 W





32

	Art. Number	Metal Finish	Color of Glass	Trimmings	Dimensions (cm)	Wattage
32	CB 1091/00/008	Polished Brass	No Glass Parts	Standard	Ø 71 ↑ 61	8x E14-40 W



Art. Number	Metal Finish	Color of Glass	Trimmings	Previous Number	Dimensions (cm)	Wattage	Weight (kg)	Cube (m ³)	Page			
29	CB 0757 /02/006	Polished Brass	No Glass Parts	Standard	45 0757 006 07 00 06 35	Ø 475	↑ 35	6x E14-40 W	5,5	0,042	19	
31	CB 0914 /00/020	Polished Brass	No Glass Parts	Standard	55 0914 020 07 00 00 35	Ø 150	↑ 75	20x E14-40 W	50	1,264	20	
13	CB 0938 /01/003	Part 24K Gold	No Glass Parts	Standard	45 0938 003 15 00 10 35	Ø 50	↑ 76	3x E14 -40 W	16	0,126	11	
24	CB 0991 /05/006	Polished Brass	Mirror	Standard-Sahara	45 0991 006 07 70 10 35	Ø 50	↑ 47	6x E14-40 W	5,2	0,066	16	
26	CB 0991 /05/006	Polished Brass	Mirror	Standard-Siam	45 0991 006 07 70 11 35	Ø 50	↑ 47	6x E14-40 W	5,2	0,066	17	
27	CB 0991 /05/006	Polished Brass	Mirror	Standard-Amethyst	45 0991 006 07 70 12 35	Ø 50	↑ 47	6x E14-40 W	5,2	0,066	17	
25	CB 0991 /05/006	Polished Brass	Mirror	Standard-Peridot	45 0991 006 07 70 13 35	Ø 50	↑ 47	6x E14-40 W	5,2	0,066	16	
14	CB 0991 /06/006	Nickel Plated	Mirror	Standard-Rose	45 0991 006 04 70 08 35	Ø 50	↑ 47	6x E14-40 W	5,3	0,066	12	
28	CB 1081 /00/009	Polished Brass	No Glass Parts	Standard	55 1081 009 07 00 00 35	Ø 74	↑ 44	9x E14-40 W	9,5	0,15	18	
7	WB 1085 /01/002	Polished Brass	Cry+Cry Frost	Standard	25 1085 002 07 80 01 35	↔ 38	↑ 30	↗ 20	2x E14-40 W	2,1	0,025	6
6	AB 1085 /01/005	Polished Brass	Cry+Cry Frost	Standard	15 1085 005 07 80 01 35	Ø 52	↑ 54	5x E14-40 W	5,5	0,075	6	
9	AB 1085 /01/008	Polished Brass	Cry+Cry Frost	Standard	15 1085 008 07 80 01 35	Ø 52	↑ 54	8x E14-40 W	8,5	0,085	8	
8	AB 1085 /01/012	Polished Brass	Cry+Cry Frost	Standard	15 1085 012 07 80 01 35	Ø 64	↑ 62	12x E14-40 W	14	0,132	7	
32	CB 1091 /00/008	Polished Brass	No Glass Parts	Standard	55 1091 008 07 00 00 35	Ø 71	↑ 61	8x E14-40 W	14	0,15	21	
12	CB 1102 /01/003	Polished Brass	No Glass Parts	Standard	55 1102 003 07 00 00 35	Ø 35	↑ 27	3x E14-40 W	3,1	0,027	10	
18	CB 1115 /00/001	Nickel Plated	No Glass Parts	Standard	45 1115 001 04 00 00 35	Ø 19	↑ 27	1x E14-40 W	2	0,025	14	
19	CB 1115 /01/001	Polished Brass	No Glass Parts	Standard	45 1115 001 07 00 01 35	Ø 22	↑ 30	1x E14-40 W	2,2	0,025	14	
10	AB 1116 /00/006	Polished Brass	No Glass Parts	Standard	15 1116 006 07 00 00 35	Ø 55	↑ 55	6x E14-40 W	3,7	0,12	9	
15	CB 1117 /00/006	Nickel Plated	No Glass Parts	Standard-Amethyst+Sapphire	55 1117 006 04 00 00 35	Ø 47,5	↑ 33	6x E14-40 W	5,8	0,082	12	
30	CB 1118 /00/006	Polished Brass	No Glass Parts	Standard	55 1118 006 07 00 00 35	Ø 50	↑ 50	6x E14-40 W	7	0,12	19	
16	CB 1119 /00/006	Nickel Plated	No Glass Parts	Standard-Sapphire	55 1119 006 04 00 00 35	Ø 70	↑ 55	6x E14-40 W	5,5	0,207	13	
17	CB 1119 /00/006	Nickel Plated	No Glass Parts	Standard-Rose	55 1119 006 04 00 01 35	Ø 70	↑ 55	6x E14-40 W	5,5	0,207	13	
20	BB 1120 /00/001	Polished Brass	No Glass Parts	Standard	45 1120 001 07 00 00 35	Ø 21	↑ 21	1x E14-40 W	0,7	0,054	14	
1	TB 1121 /00/001	Polished Brass	No Glass Parts	Standard	35 1121 001 07 00 00 35	Ø 22	↑ 24	1x E14-40 W	1,5	0,25	4	
2	TB 1122 /00/001	Polished Brass	No Glass Parts	Standard	35 1122 001 07 00 00 35	Ø 15	↑ 29	1x E14-40 W	1,5	0,019	4	
21	TB 1123 /00/001	Polished Brass	No Glass Parts	Standard	35 1123 001 07 00 00 35	Ø 13	↑ 17	1x G9-40 W	1,3	0,008	15	
22	TB 1123 /01/001	Polished Brass	No Glass Parts	Standard	35 1123 001 07 00 01 35	Ø 13	↑ 17	1x G9-40 W	1,3	0,008	15	
23	TB 1123 /02/001	Polished Brass	No Glass Parts	Standard	35 1123 001 07 00 02 35	Ø 13	↑ 17	1x G9-40 W	1,3	0,008	15	
5	WB 1125 /00/001	Polished Brass	Crystal	Standard	25 1125 001 07 01 00 35	↔ 12	↑ 32	↗ 21	1x E14-40 W	1,3	0,019	5
3	TB 1125 /00/001	Polished Brass	No Glass Parts	Standard	35 1122 001 07 00 01 35	Ø 15	↑ 29	1x E14-40 W	1,5	0,019	4	
4	AB 1125 /00/006	Polished Brass	Crystal	Standard	15 1125 006 07 01 00 35	Ø 68	↑ 47	6x E14-40 W	7,1	0,255	5	
11	CB 1427 /00/006	Polished Brass	Crystal	Standard	67 1427 006 07 01 00 35	Ø 55	↑ 31	6x G9-40 W	3	0,12	10	

Manufacturer reserves the right to effect minor design changes to its products.

THE EXAMPLE OF NUMBERING

A B 1125 / 00 / 006

① ② ③ ④ ⑤

①

Sort

- A – Arm Type Chandeliers
- W – Wall Brackets
- T – Table Lamps
- C – Ceiling Chandeliers
- B – Basket Type Chandeliers
- P – Pendant Type Chandeliers
- F – Floor Lamps

②

Category

- S – Crystal Symphony
- C – Bohemian Classic
- E – Enamel Romance
- M – Maria Theresa
- L – Light Elegance
- R – Royal Heritage
- B – Brilliant
- D – Contemporary Lighting

③

Type number

④

Variant

⑤

Number of sources of light

Brilliant



PRECIOSA CUSTOMER CENTRE

Opletalova 3197
466 67 Jablonec nad Nisou

Czech Republic

Tel.: +420 488 115 555
Fax: +420 488 115 665
E-mail: info@preciosa.com

PRECIOSA INT'L (HK) LTD.

Unit 2004-2005 Chevalier Commercial Centre,
8 Wang Hoi Road, Kowloon Bay

Hong Kong

Tel.: +852 2753 9595
Fax: +852 2753 9997
E-mail: info@hk.preciosa.com

PRECIOSA GULF, FZCO

P.O.Box 18185
Dubai

United Arab Emirates

Tel.: + 971 48 838 473
Fax: + 971 48 837 913
E-mail: sales@gulf.preciosa.com

PRECIOSA (SG) PTE. LTD.

51 Goldhill Plaza #08-08/09

Singapore 308900

Tel.: +65 6254 4465
Fax: +65 6254 4495
E-mail: sales@sg.preciosa.com

PRECIOSA INTERNATIONAL, s.r.o.

Kalvínske námestie 2, 934 01 Levice

Slovak Republic

Tel.: + 421 366 224 124
Fax: + 421 366 224 124
E-mail: sales@sk.preciosa.com

PRECIOSA INTERNATIONAL, INC.

2316 Wehrle Drive
Williamsville, NY 14221

U.S.A

Tel.: + 1 (716) 626 9759
Fax: + 1 (716) 626 9758
E-mail: sales@usa.preciosa.com

PRECIOSA CENTR, A. O.

Office 150, Entr. 7
4th Tverskaya - Yamskaya Str., 33/39
125010 Moscow

Russia

Tel./Fax: +7 495 961 31 07
+7 495 961 31 08
E-mail: centr@preciosa.ru

PRECIOSA Leuchten GmbH

Hauptstr. 37
D-95767 Wiesau

Germany

Tel.: + 49 - 96 - 34 91 59 430
Fax: + 49 - 96 - 34 91 59 460
E-mail: sales@leuchten.preciosa.com

www.preciosa.com

